

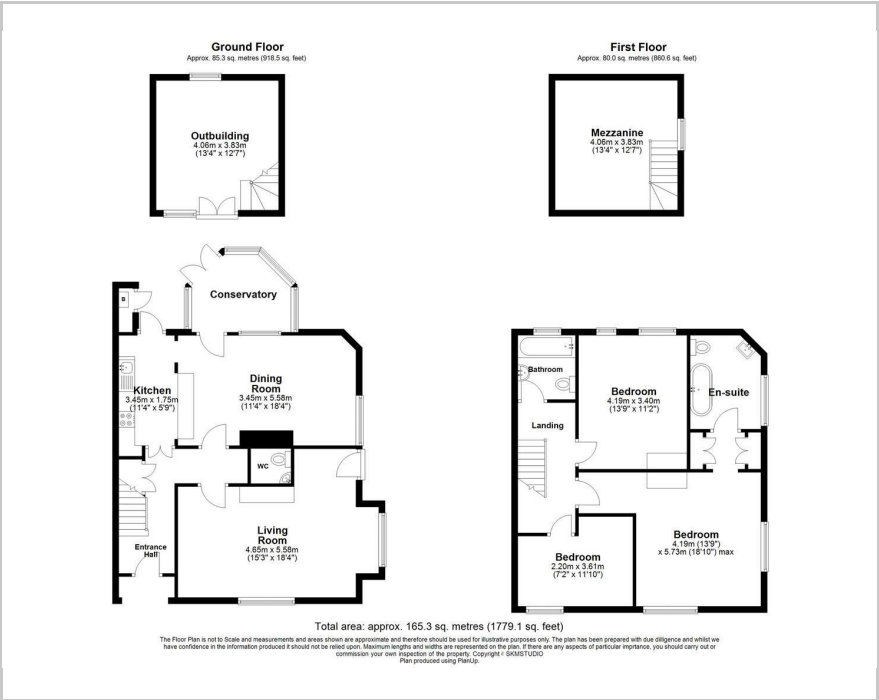


Fernley House The Green, Croxley Green, WD3 3HT  
Price Guide £1,150,000





Floor Plan



Area Map



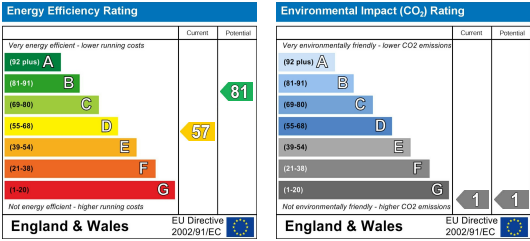
Accommodation

- Beautiful presented character property located in prime position on The Green
- Walking distance to Met Line station and Rickmansworth School
- 3 Double bedrooms master with large En-Suite and dressing area
- Large multi use barn to rear of property with a mezzanine floor, perfect for converting
- Pretty courtyard garden to the rear
- Open plan Kitchen/Dining room, separate Reception room overlooking The Green

Viewing

Please contact our Grosvenor Estate Agents Ltd Office on 01923 711651 if you wish to arrange a viewing appointment for this property or require further information.

Energy Efficiency Graph



These particulars, whilst believed to be accurate are set out as a general outline only for guidance and do not constitute any part of an offer or contract. Intending purchasers should not rely on them as statements of representation of fact, but must satisfy themselves by inspection or otherwise as to their accuracy. No person in this firms employment has the authority to make or give any representation or warranty in respect of the property.